

Copeland District Association

Draft Minutes

Annual General Meeting

Tuesday 25th July 2023

Virtual Meeting via Teams

7.00 pm start

Attendees

| Name | Local Council |
|---------------------|--|
| Andrew Pratt | Chair Copeland DA Drigg and Carleton Parish Council |
| Doug Sim | Vice Chair Copeland DA St. Bees Parish Council |
| Dave Faulkner | Bootle Parish Council |
| Ged McGrath | Millom Town Council |
| Chris Whiteside | Egremont Town Council |
| Chris Clarkin | Distington Parish Council |
| David Savage | Millom Without Parish Council |
| Linda Jones-Bullman | Cleator Moor Town Council |
| Kate Grove | CALC |

| | |
|----|---|
| 1. | Welcome & Introductions Andrew Pratt as Chair opened the meeting, welcomed attendees and asked attendees to introduce themselves. |
| 2. | Apologies Kate Grove informed attendees that apologies had been received from: Elaine Woodburn, Egremont Town Council. |
| 3. | Approval of the minutes of the Copeland DA AGM 12/07/2022. Ged McGrath asked that the minutes of the AGM 2022 be amended to read Ged McGrath Millom Town Council not Millom Without Parish Council. David Savage seconded this amendment. Action: Kate Grove to amend minutes and redistribute. (done 26/07/23). |
| 4. | Appointment of Chair Copeland District Association. Andrew Pratt was proposed as the Chair for Copeland DA 23-24 by Ged McGrath. Seconded by Chris Whiteside. All were in favour of the proposal. |

5. Appointment of Vice Chair Copeland District Association.
 Doug Sim was proposed as Vice Chair for Copeland DA 23-24 by Andrew Pratt. Seconded by Ged McGrath. All were in favour of the proposal.

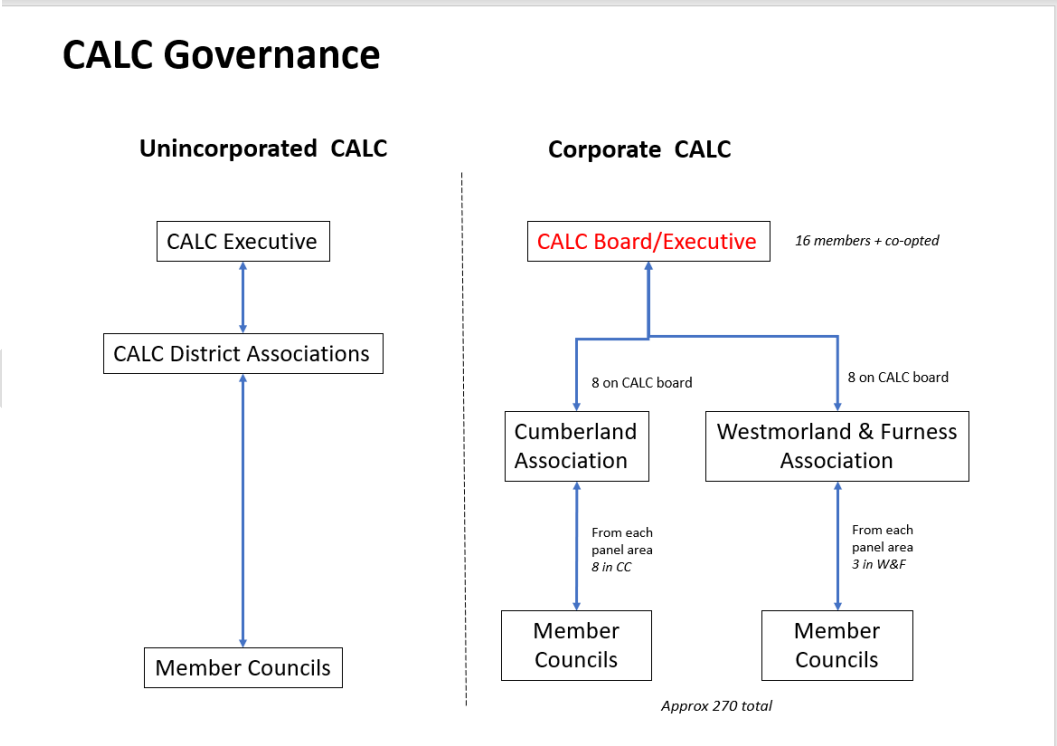
6. Discussion re CALC, Local Councils, Community Panels & Community Network Panels.

1. David Savage asked why we are still referring to ourselves as Copeland DA when we are now known as Cumberland.

Andrew Pratt replied that CALC are currently going through a transitional change to become a Private Company Limited by Guarantee. CALC held an SGM on 22/07/23 to approve the transitional governance arrangements to move to a Private Company limited by Guarantee. Electing a Chair and Vice Chair for each of the current 6 District Associations is part of that process.

CALC are moving towards 2 Locality Associations, one for Cumberland and one for Westmorland and Furness.

Doug Sim further explained the new structure with 2 Locality Associations use this slide:

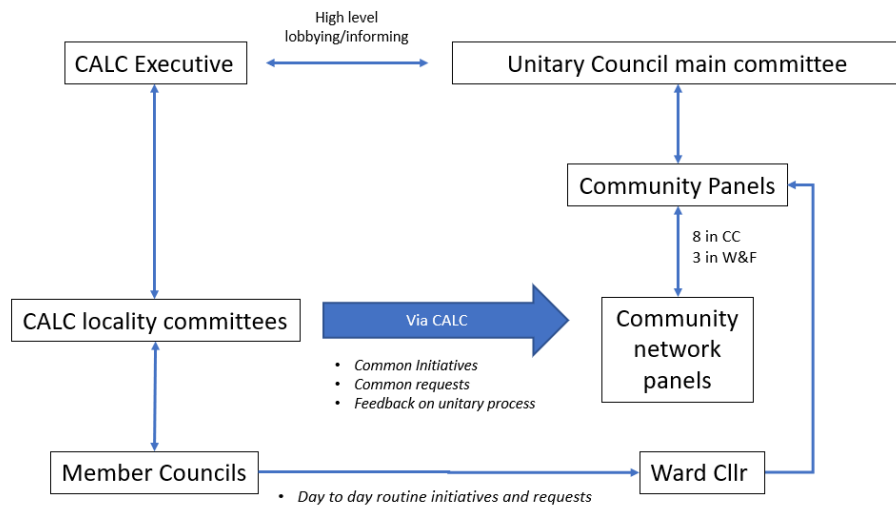


2. How does CALC see themselves represented on the new Community Panels/Community Network Panels.

Doug Sim shared a slide 'CALC and Unitary Interfaces' to explain how CALC potentially fitted in.

CALC and Unitary Interfaces

Where does CALC fit in?



Andrew Pratt informed attendees that within his Area 8, Parish Councils can attend Community Networks.

Ged McGrath added that places on the Community Panels will be led by the Community Panels, and it was not guaranteed that CALC would get a seat.

Chris Whiteside stressed that it was important that Community Panels had some level of devolved functioning and budget powers.

It was raised that Community Panels will each have a budget for priority projects that were identified by members of the area Community Panel but did need to be in line with the key objectives of Cumberland Council.

Dave Savage raised the question as to whether CALC can currently add value to a Community Panel. It was agreed that CALC need to re-engage with Local Councils, as they had lost support.

Chris Whiteside added that he is extremely worried about the level of involvement in town and parish councils. For example, this can be demonstrated by how few contested elections there were this year. Many Local Councils in Copeland had fewer candidates than there were vacancies to be filled. We need to take up opportunities for involvement if they're offered. Not being involved in community panels would be a backward step.

Linda Bullman stated that Cumberland is about working with communities. it isn't about taking powers or not working with town and parish councils. Community network panels can be open to everybody, the Community and Local Councils. There may be 'splitting' of network community panels in some areas, so they are more community focussed. The budget the Community panels have is limited; £64,300 for Area 8. The funding is to create/support community initiatives/projects, not to pay for services/wages etc.

| | |
|----|---|
| | <p>Doug Sim questioned the actual power of the Community Panels and whether it was worthwhile having a seat on them.</p> <p>David Savage agreed that the community panels were the wrong place to divest our energy, and we should perhaps use that energy to rebuild our own networks, and demonstrate to our own people that we can make a difference at the Parish Council level.</p> <p>Doug Sim added that CALC should be used as a vehicle to influence Policy on behalf of Local Councils at a National Level. For example in relation to the recent going to out for consultation by Government in relation to Zoning for Airbnbs. CALC need to repurpose themselves.</p> <p>Andrew Pratt agreed and said that CALC should be addressing the bigger issues.</p> <p>Action: Doug Sim will share then Airbnb Consultation with David Savage as requested.</p> <p>Andrew Pratt clarified that Policy that was unique to the Unitary Authority should be raised with the Unitary Authority. Influencing National (Government) Policy would be done through NALC.</p> <p>Agreed we should be looking at the 'bigger ticket' items (policies) and addressing them collectively.</p> <p>Action: Copeland DA to go back to CALC to discuss policies, lobbying on collective issues and the 'bigger ticket' items.</p> |
| 7. | <p>Discussion on topics for future events/meetings of Copeland District Association.</p> <p>Topics discussed and agreed were:</p> <ol style="list-style-type: none"> 1. Chris Clarkin- CALC Training available for Local Councils (Kate Grove shared the CALC website training link http://www.calc.org.uk/members/training/trainingbanner.asp and the contact details for CALC training and development officer Rachael.kelly@cumbria.gov.uk) 2. Doug Sim- Sellafield Travel Routes for parish councils within the areas affected. 3. David Savage – It would be beneficial to ask Local Councils across Copeland what the top 3 issues that are affecting them at the moment, so we can see where support is required. This will help with re-engagement. 4. Andrew Pratt- We need to address the 'bigger ticket' policy items. We need to act together as a collective of Parishes. <p>Action- Andrew Pratt will feed back to CALC relevant information from discussions in particular CALCs role and what we should be focussing on going forwards.</p> |